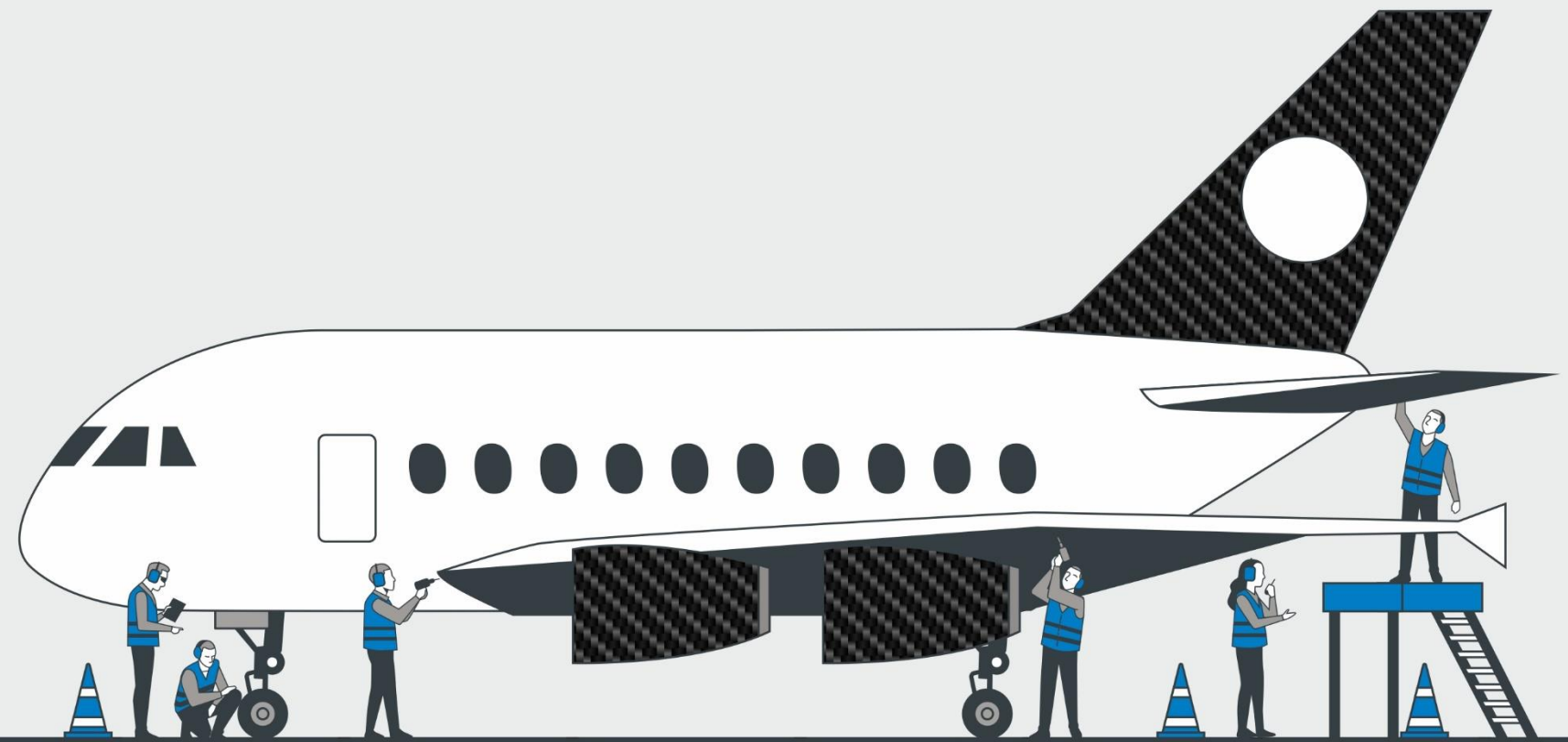




**SHISH**  
ADVANCED COMPOSITES



# Imagineering **Tomorrow**

COMPREHENSIVE SOLUTIONS IN ADVANCED COMPOSITES



# A B O U T U S

Founded in 2009, SHISH began with a vision—to create, innovate, and lead. What started with fine jewelry craftsmanship soon expanded into pioneering advancements in packaging, insulation, and composite materials. With an unwavering commitment to excellence, we have embraced challenges, transformed industries, and set new benchmarks for quality and innovation.

Each milestone in our journey has strengthened our global presence. From introducing high-performance packaging solutions to developing cutting-edge insulation materials, our expansion has been fueled by a relentless pursuit of progress. Through strategic diversification, we have built a foundation rooted in resilience, adaptability, and forward-thinking solutions that cater to evolving global demands.

As we continue to grow, our vision remains clear—to push boundaries, redefine industries, and create solutions that shape the future. With every innovation, we move closer to a world where possibilities are limitless, challenges become opportunities, and excellence is not just a goal but a standard.

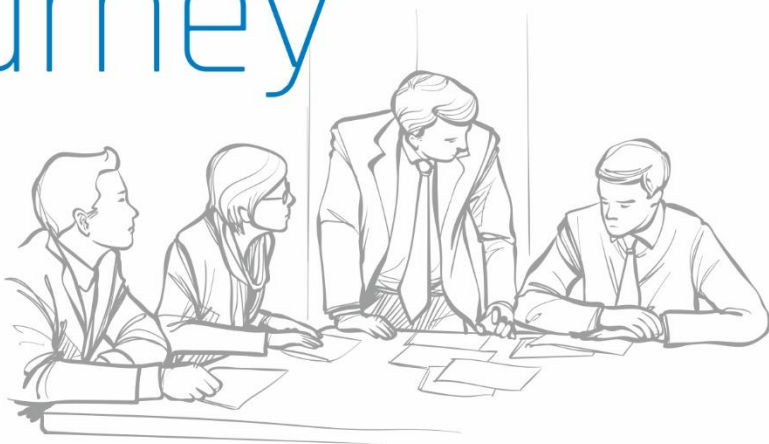




# The SHISH Journey

## A Legacy of Vision, Innovation, and Expansion

From humble beginnings to industry leadership, our journey has been marked by innovation and growth.



2009

### A Spark of Brilliance

**SHISH Jewels**, founded by Mr. Satish Maniya and Mr. Ramesh Kakadiya, later joined by Mr. Sunil Shah, specializes in crafting exquisite Arabic jewellery. Entered prestigious Gulf markets: Oman, Kuwait, Dubai, Saudi Arabia.

2012

### Laying the Foundation of Innovation

Established **SHISH Industries**, pioneering PP corrugated sheets in packaging.

2016

### Expanding Horizons

Diversified into insulation products, setting new benchmarks in efficiency and sustainability.

2017

### A Milestone on the Global Stage

**SHISH Industries** became a publicly listed company on the Bombay Stock Exchange (BSE).

2019

### Strengthening Global Presence

Expanded **SHISH Jewels** to the USA (Truth Jewels).  
Launched **Composite Strap**, an innovative packaging solution.

2020

### Pioneering Transformations

Introduced **Dunnage Bag**, later forming **Dunnage Bag Pvt Ltd**.

2021

### Building a Legacy Beyond Business

Established **SHISH Foundation** for CSR initiatives.  
Founded **SHISH Polylam** for advanced insulation laminates.  
Expanded **SHISH Jewels** with a second unit in SEZ Sachin.

2022

### Establishing a Stronghold in the USA

Launched **Green Energy International Inc.** for insulation, construction, and packaging solutions.

2023

### Innovation, Integration & Expansion

Introduced **InPackaging**, a franchise model for diverse packaging needs (8+ franchises).  
Launched **VRSIST Inc (USA)**, a virtual front desk assistance service in the U.S.  
**Shish Industries** Expanded manufacturing capacity with 4 lakh sq.ft unit.  
Launched **InterStar Polyfab Pvt Ltd** for woven fabric manufacturing.  
Entered **FIBC (Jumbo Bags)** production, reinforcing industry leadership.

2024

### A New Era of Advanced Engineering

Launched **SHISH Advanced Composites** to revolutionize high-end applications with cutting-edge composite solutions.

**SHISH**

### Shaping the Future with Unwavering Excellence

From luxury jewellery to industrial and advanced engineering solutions, **SHISH** has become a global force, defined by innovation, integrity, and an unyielding drive for excellence.



# SHISH Foundation

**At SHISH Foundation, our commitment towards society is not just a mere obligation, but a fundamental aspect deeply ingrained in our core values.**

**We are committed to creating a better future for humankind by developing effective and socially responsible individuals and organizations.**



## Quality Education

Enhancing education access by boosting school and community center enrollment, promoting technology use, and fostering hands on learning and 21st century skills.



## Healthcare and Hygiene

Various community development programs are initiated to focus on many social challenges in the community.



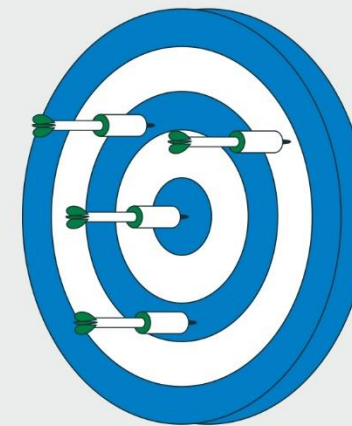
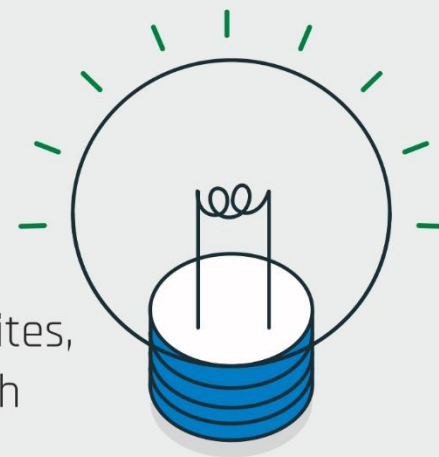
## Community Development

Helping improve access to quality health care by expanding infrastructure of health centers and outreach services.



## VISION

To be the most trusted partner in advanced composites, delivering innovative solutions for sustainable growth



## MISSION

To design and deliver cutting-edge advanced composite solutions that drive innovation, enhance performance, and promote sustainability. We are committed to building lasting relationships with our customers by consistently exceeding expectations and contributing to a more efficient future.

# The Pillars of Leadership



**SATISH MANIYA**

Chairman

An investor and visionary multipreneur with a deep passion for innovation, focused on driving growth, shaping strategies, and building transformative businesses. Founder - Director of Shish Industries Ltd, the investing firm of Shish Advanced Composites.



**RAMESH KAKADIYA**

Whole-time Director

A trailblazing leader who fearlessly challenges the status quo—a multipreneur and strategic investor with an unwavering passion for innovation. Committed to accelerating growth and building future-ready enterprises, he serves as the Founder - Director of Shish Industries Ltd, the investing firm behind Shish Advanced Composites.



**P N GUPTA**

Managing Director

Vast experience in Advanced Composites. Starting with LCA and ALH projects at HAL, leading production & program management at L&T, heading operations at the Boeing-funded Tata Aerospace plant, and served as Plant Head at Rockman Advanced Composites Hero Group.



**V K DEEPAK**

Director-Operations

Extensive expertise in advanced composites manufacturing, with a strong focus on operations, quality management systems (QMS), and continual improvement. Experience spans leadership roles at Rockman Advanced Composites, Suzlon, Ahresty, & Minda, managing production & program operations across aerospace, automotive, motorsports, and wind turbine sectors.



**SRINIVAS BORGAONKAR**

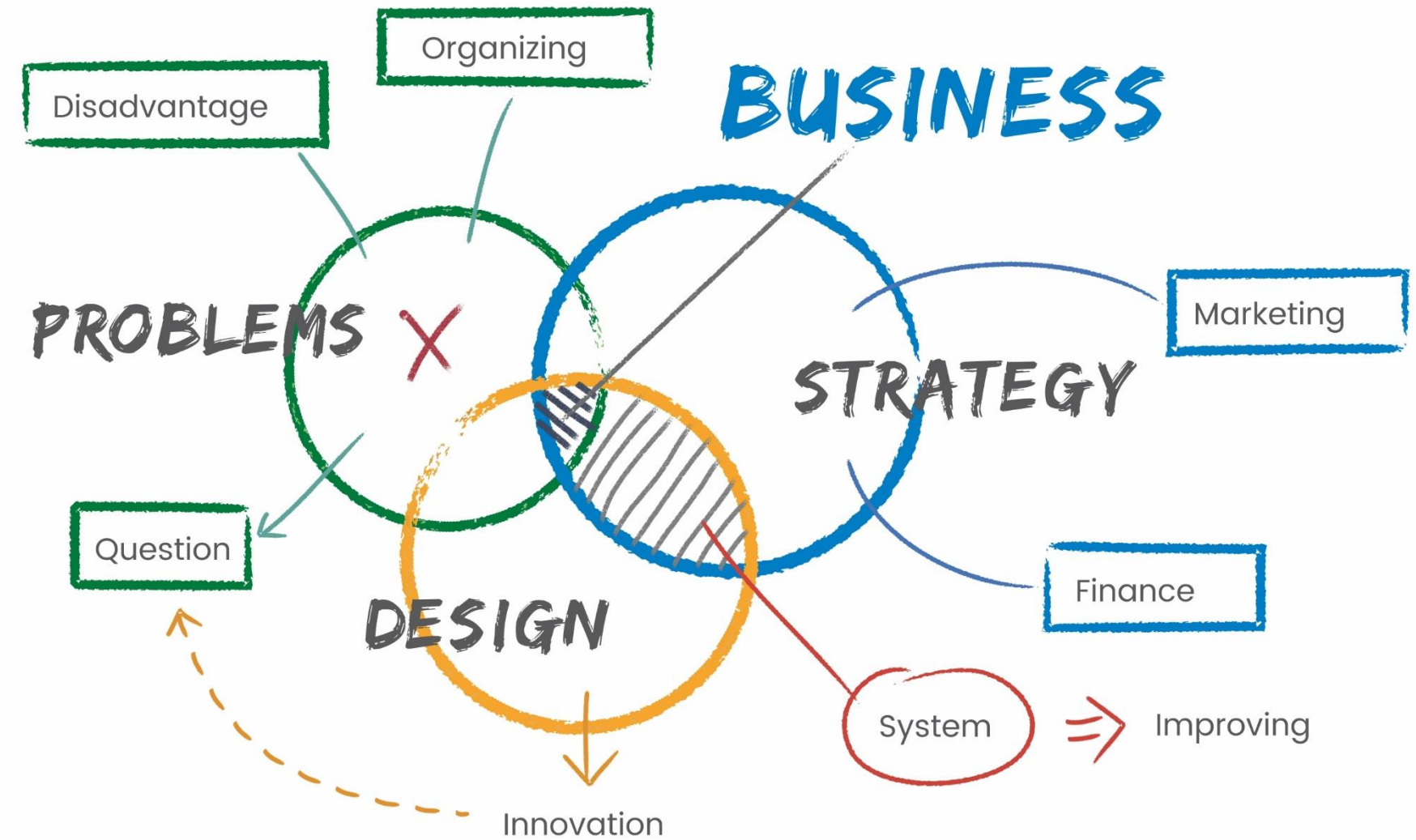
Director-Business Development

Proven expertise in Business Development, strategy, and market expansion in Automotive and Aerospace sectors, specializing in metallics and composites. Served India, EU and US markets with industry leaders like Rockman - Hero Group, Godrej Aerospace, TVS Group, and Bharat Forge.



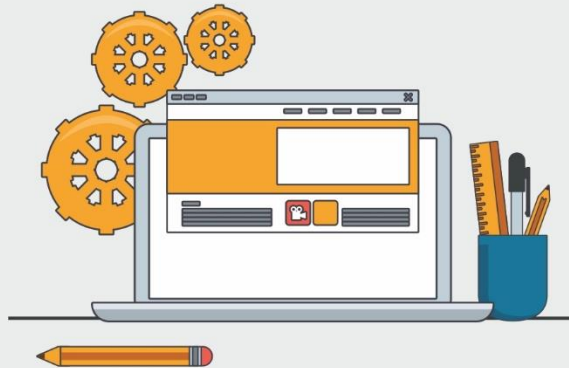
# Business Divisions

Your Integrated Composites Solutions Provider



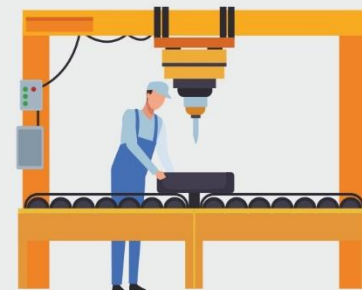
## ENGINEERING

Engineering



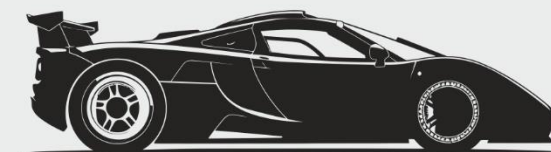
## TOOLING

Tools, Jigs & Fixtures  
Manufacturing



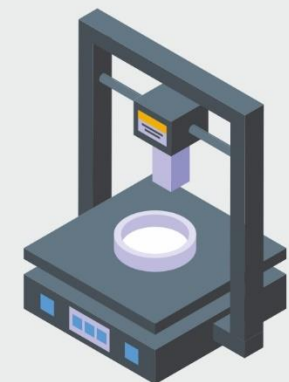
## PARTS AND ASSEMBLIES

Composites Parts &  
Assemblies Manufacturing



## TESTING

Material Testing



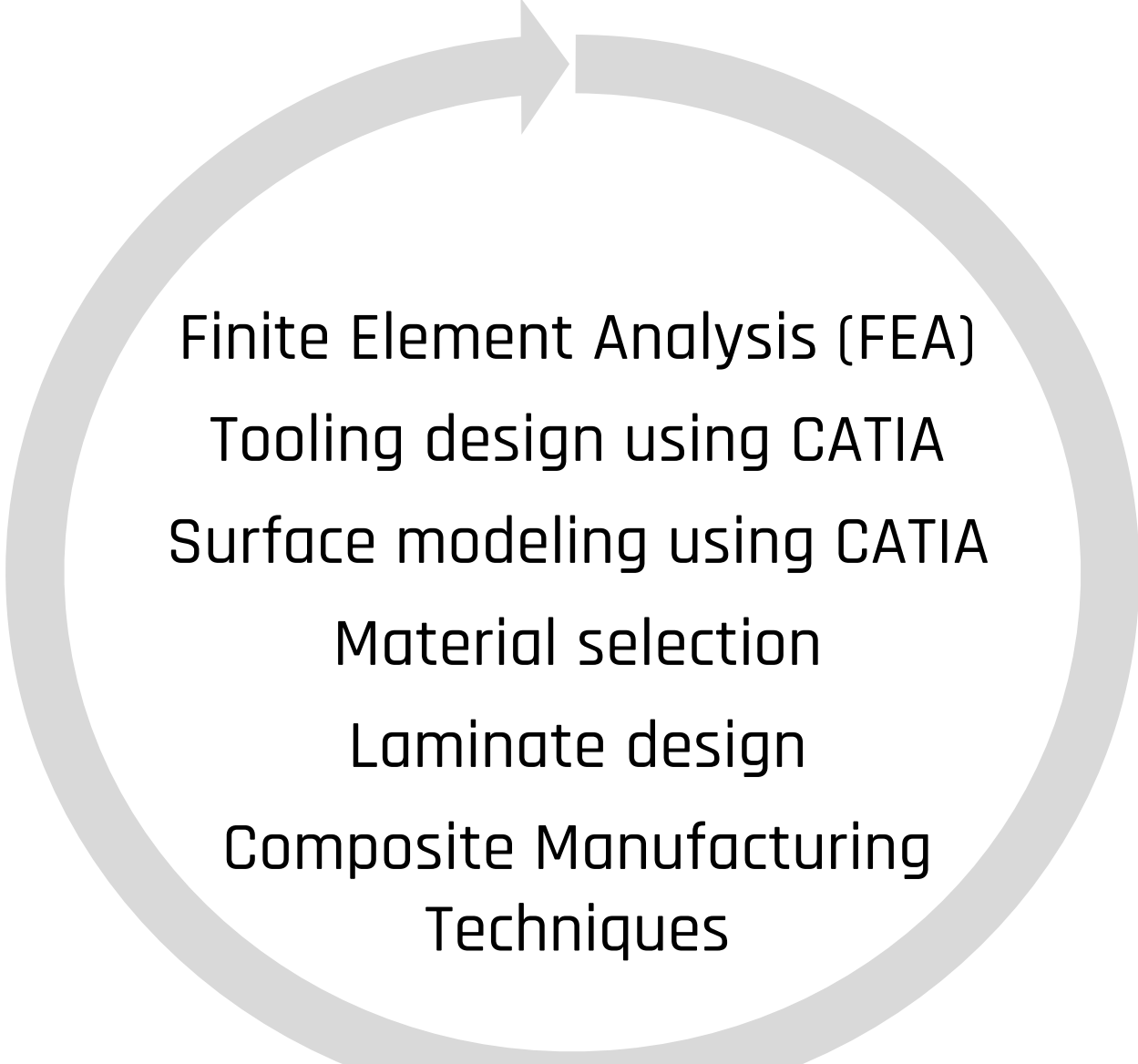
# Engineering **Services**

Comprehensive Engineering Solutions in Advanced Composites

DESIGNING

PROTOTYPING

SERIES PRODUCTION



Finite Element Analysis (FEA)  
Tooling design using CATIA  
Surface modeling using CATIA  
Material selection  
Laminate design  
Composite Manufacturing  
Techniques

# Tooling, Jigs & Fixtures Manufacturing

DESIGNING & PROGRAMMING  
MACHINING

MATERIALS TAILORED TO APPLICATION NEEDS  
UNPARALLEL PRECISION & PERFORMANCE

Epoxy Tooling Board



Aluminum Alloy



Invar



Medium-Density  
Fiberboard (MDF)



Carbon Fiber



Stainless Steel



# Composites Parts Manufacturing

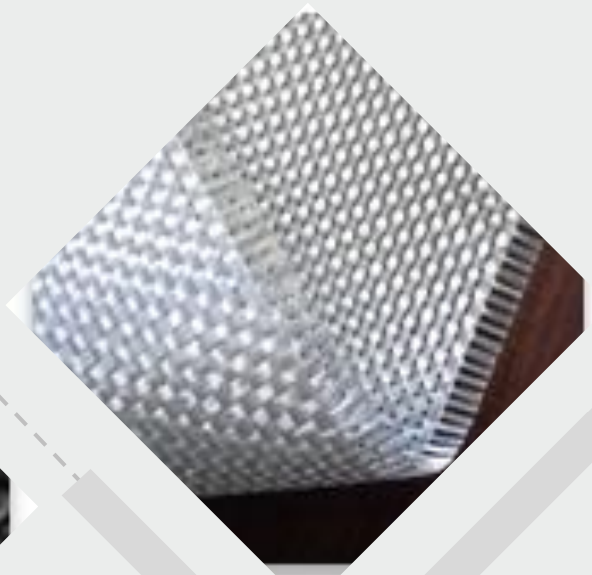
LAMINATE DESIGN

PREPREG BASED RAW MATERIALS

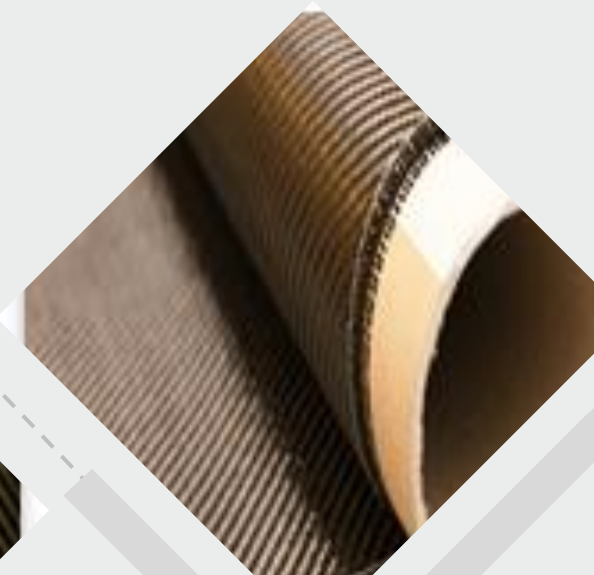
WIDE VARIETY OF RESIN SYSTEMS

AUTOCLAVE CURED

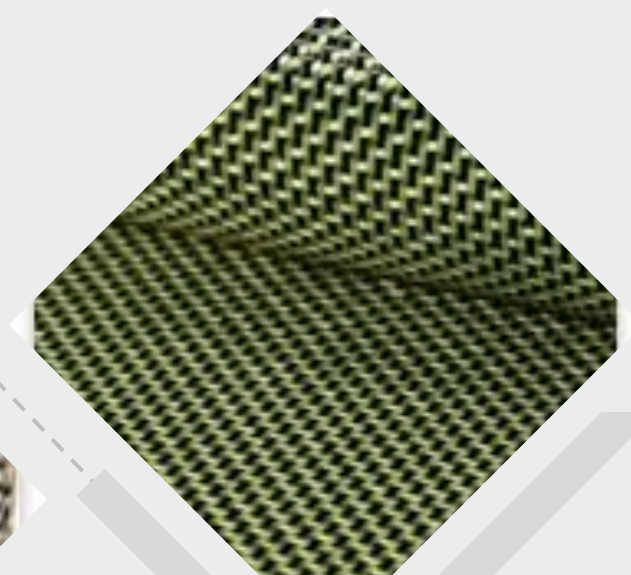
Glass Prepreg



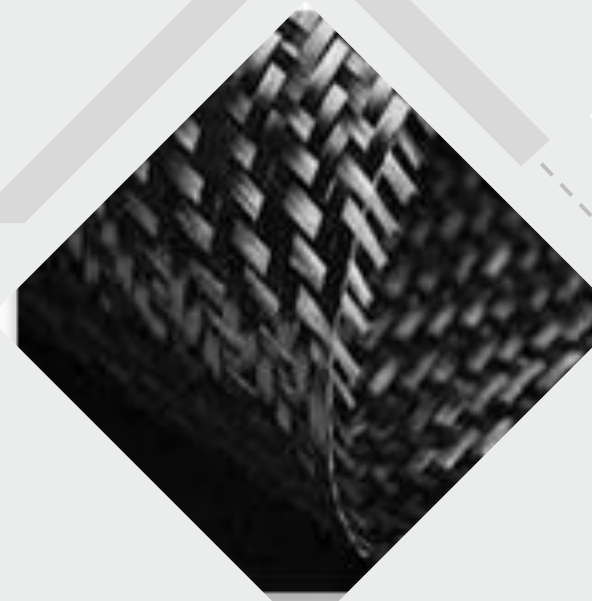
PBO Prepreg



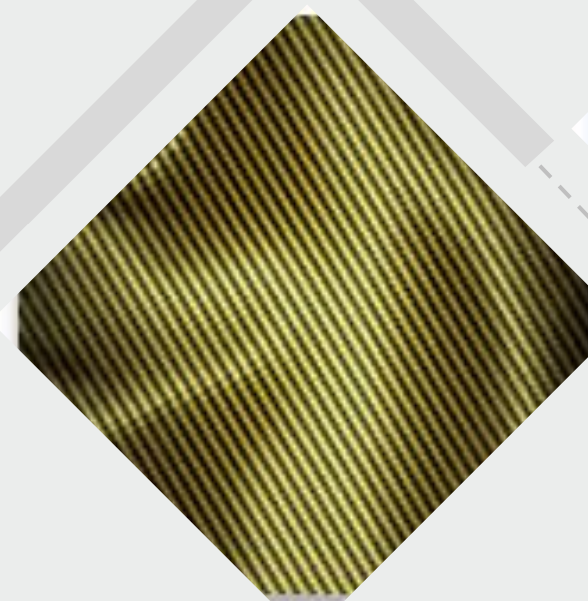
Carbon Aramid Hybrid Prepreg



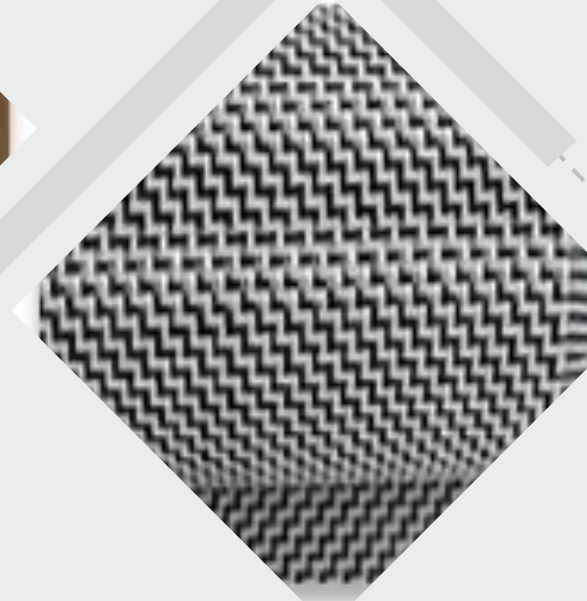
Carbon Prepreg



Aramid Prepreg



Glass- Carbon Hybrid Prepreg



# Composites Parts Manufacturing



SANDWICH STRUCTURES  
WIDE VARIETY OF CORE MATERIALS



# Manufacturing Facility

## FACTORY SPACE



Total Built Up area (m<sup>2</sup>): 6000

No. of floors: 3

Additional floor place available for expansion (m<sup>2</sup>): 10,000

## CLEAN ROOM



Class 7 floor area (m<sup>2</sup>): 175

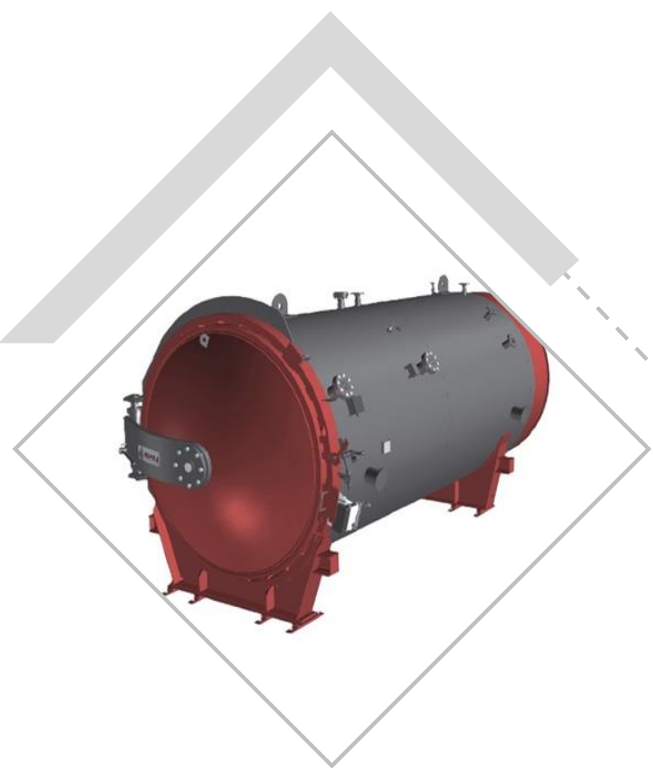
Class 8 floor area (m<sup>2</sup>): 600

[Note: Can be upgraded to Class 7 within a short period of time]

Features: Connected with the air lock rooms, pass boxes, periodic dust particle counter and environmental monitoring system round the clock

# Manufacturing Facility

## AUTOCLAVE



Make:	Scholz, Germany
Size(m):	5 L x 2 Ø
Vacuum Ports (nos.):	16
Max Pressure (bar):	10.5
Max Temp (°C):	250

## 5-AXIS CNC



Make	Breton, Italy
Size(m):	4L x 2W x 1.3H
Equipped with heavy duty, dual suction, explosion proof dust extraction system	

## FREEZER



Make:	Bluestar
Size(m):	5L x 5W x 3.5 H
Qty:	4

## PLY CUTTING



Make:	Gunnar, Switzerland
Size(m):	2.5 L x 1.3 W
Features:	Covnverized bed with automated roll feeder



# Manufacturing Facility

## MEASUREMENT SYSTEMS



Make:	CREAFORM
Model	MetraSCAN 3D
Accuracy	25 $\mu$ m



## SURFACE TREATMENT

As per customer requirement



## DESTRUCTIVE TESTING

Make:	Instron
Capacity(kN):	Up to 100



## ULTRASONIC TESTING

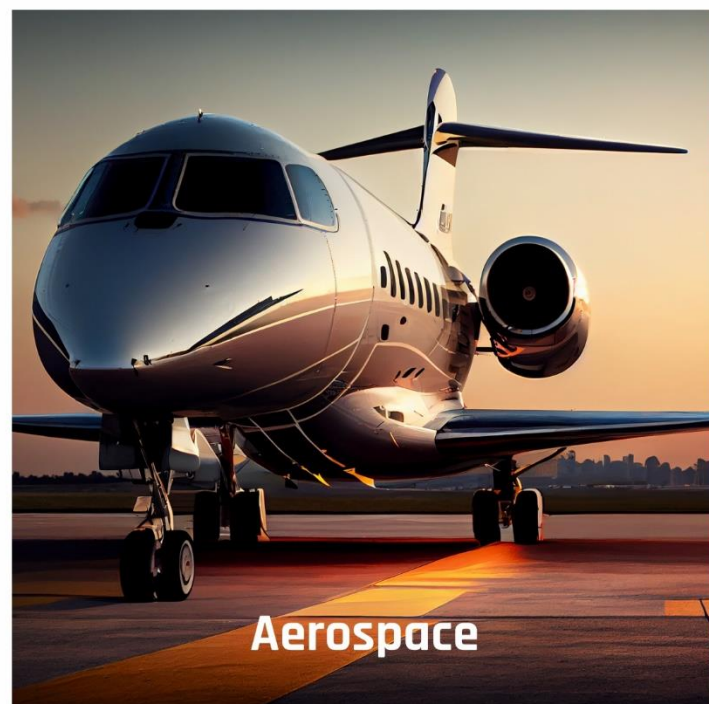
A & C Scan Facilities





# TargetedSectors

Delivering tailored solutions that drive innovation, enhance performance, and help fuel the future of multiple industries worldwide.



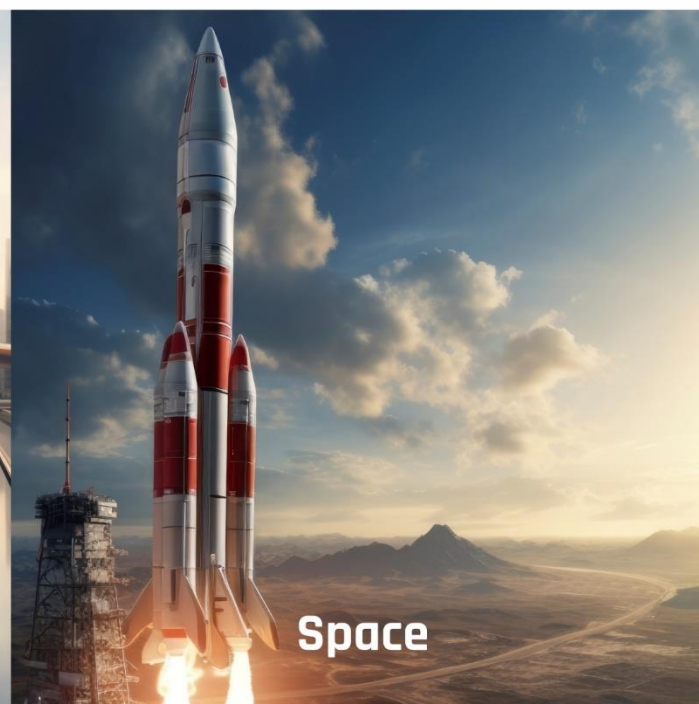
Aerospace



Motorsports



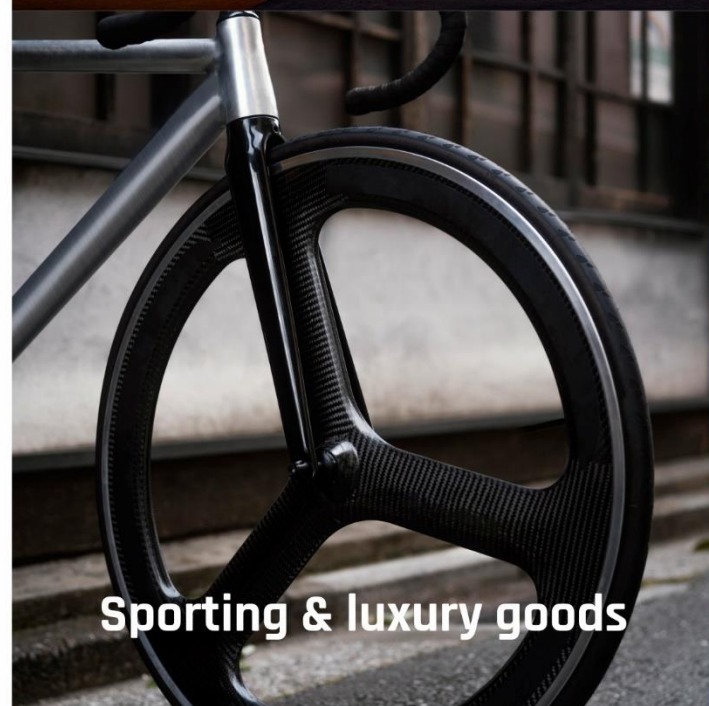
Automotive



Space



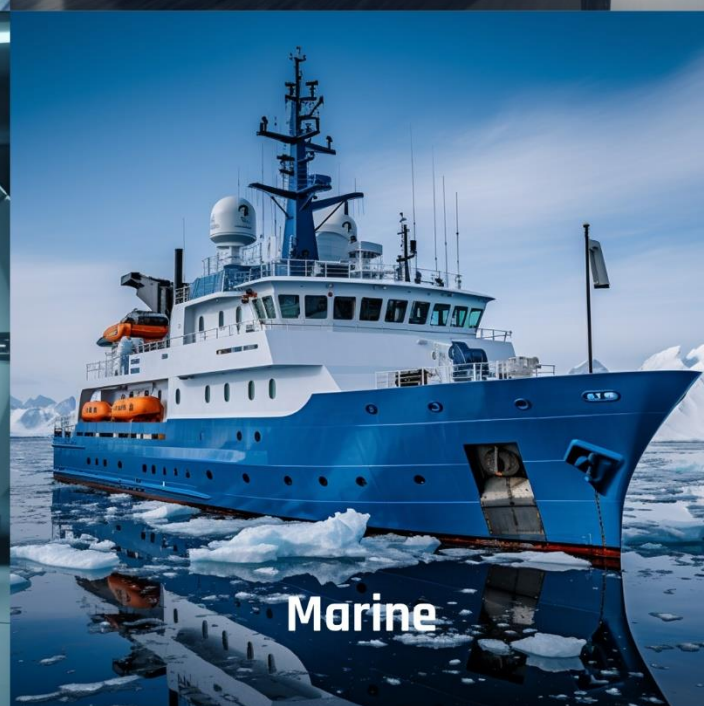
Railways



Sporting & luxury goods



Healthcare & Other Industries



Marine



Renewable Energy



R & D





**SHISH**  
ADVANCED COMPOSITES

# Location

## PLANT LOCATION SURAT, INDIA

### **Key Highlights about the location**

- Right on the National Highway on the Mumbai - Delhi Industrial corridor
- 1 Hour from Hazira & Dahej Sea Port
- 45 mins from Surat International Airport
- 3 Hours drive from Mumbai International Airport
- Superior Road, Rail & Air connectivity

# Thank You



**Shish Advanced Composites Pvt. Ltd.**  
**Techno Park, Canal Road, Mahuvej, Surat-394125, Gujarat, India**

---



[www.shishac.com](http://www.shishac.com) | [connect@shishac.com](mailto:connect@shishac.com)

---



+91 9380262625